

Light for the medical workplace





Table of contents

About Derungs Licht AG	04	Accessories	86
• In use worldwide	04		
• Swiss Engineering	06	Arm solutions	92
• Quality as a characteristic	08	• TENO	94
• Our customers	10	• VISO	98
• Product overview	12		
		Service	102
Surgery lights	16	• Service, Support & Partnership	104
• TRIANGO 130 Duo	18	• Product registration	106
• TRIANGO 130	22		
• TRIANGO 100 (Duo)	26	Light facts	108
• TRIANGO 80	30	• Colour temperature	110
• TRIANGO 60	34	• Wood's Light	114
Examination lighting	38	Last but not Least	116
• VISIANO 20	40	• Our mission statement	116
• VISIANO 10	44	• Imprint	118
• HALUX N50	48		
• HALUX N30	52		
Magnifier luminaires	60		
• OPTICLUX Hand	62		
• OPTICLUX 10	66		
Care lights	70		
• AMALIA	72		
• CULTA LED	76		
Laboratory luminaires	80		
• TANE0 Lab	82		

In operation worldwide



About Derungs Licht AG

We are a medium-sized family business that can look back on more than 80 years of experience in lighting technology. At our location in Gossau (Switzerland) we develop and assemble medical luminaires for physicians all over the world.

Derungs Licht AG is a subsidiary of the international Waldmann Group. Consulting and sales of the luminaires are carried out by the Waldmann-national companies and Derungs partners.



100% heart and soul



Swiss engineering

Our products have Swiss roots! Together with renowned product designers and users, we develop innovative lights. We are a member of the Swiss Medical Engineering Industry Association.

Quality is our top priority: from the selection of materials to the final assembly, every light passes through our TÜV-certified quality management.

Typically Derungs

Special optics

Our proprietary optics ensure a homogeneously illuminated work area without glare.

Positionally accurate arm systems

Our support arms can be easily aligned and do not rift. This applies to both left- and right-handed users.

Quality in every detail

When selecting our suppliers, we focus on high quality standards and long-term cooperation.

Developed for everyday use

Ergonomic comfort, high lighting quality and good cleaning properties provide ideal support in everyday medical life.



Quality as a feature



Fatigue-free work

Light perks up tired eyes

Poor lighting conditions put a strain on our eyes. Headaches, burning eyes and decreased performance can follow. A homogeneous, glare-free light field noticeably relieves strain and promotes performance. A well thought-out lighting concept should therefore include not only the general lighting but also the working area on the patient or in the laboratory.



Optimal vision

For optimum lighting conditions, light sources with a colour temperature range between 4500 Kelvin and 6500 Kelvin are recommended. Pigment changes, skin disorders or tissue structures can be optimally represented in this colour range.

The Ra index describes how true to life the colours are reproduced under the light source. The two most important test colours for you as a medical professional are: R9 – red tones and R13 – skin tones. Derungs medical lights have excellent colour rendering properties.

Best lighting conditions

Illuminance, light colour, and colour rendering are optimized to the daily routine in the clinic. Specially developed optics ensure a homogeneously illuminated work area. The medical luminaires achieve excellent colour rendering and facilitate diagnosis and treatment. In addition, the illuminance can be dimmed depending on the model.



Easy cleaning

Due to the crevice-free design of the Derungs medical lights the penetration of liquids and dust is limited. The cleaning of the surfaces is noticeably easier. The handles of the operation lights TRIANGO 130, TRIANGO 100, TRIANGO 80 and TRIANGO 60 can be removed with one hand and sterilized.

In our instructions for use, you will find information on suitable cleaning agents and care instructions.

Our customers



The Derungs portfolio includes products for the medical workplace in clinics, hospitals and laboratories, in human, dental and veterinary medicine. With so many different options in both light output and functionality, users can find the ideal solution for their application and facility.



Clinics & hospitals

Medical lighting for different departments as well as Care lights and support arm systems.



Dermatology & plastic surgery

Lighting equipment for surgical and aesthetic treatments and examinations.



Dental medicine

Operation lights for oral and maxillofacial surgery as well as implantology and workplace lighting for dental laboratories.



Gynecology & urology

Special examination lights connected to examination chairs as well as ceiling mounted operation lights.



General medicine

Universal lights for general examinations, minor surgical treatments and practice laboratories.



Veterinary medicine

Lighting solutions for examinations and minor surgeries as well as special dermatological diagnoses.



Product overview



TRIANGO 80 **TRIANGO 60**

EMERGENCY ROOM

- Emergency room
- Shock room

VISIANO 20 **VISIANO 10** **HALUX 50**

SURGICAL PREPARATION

- Preparation room
- Anesthesia

TRIANGO 130 **TRIANGO 100** **TRIANGO 80**

SURGERY

- Small operating theater
- Outpatient operating theater
- Anesthesia laboratory
- Endoscopy

OPTICLUX **OPTICLUX Hand**

VISIANO 20 **HALUX 50**

EXAMINATIONS

- General Medicine
- Intensive care department
- Dermatology
- Gynecology
- Dentistry

AMALIA **CULTA**

NORMAL CARE

- Nursing station

HALUX 50 **VISIANO 10**

INTENSIVE CARE

- Intensive care unit
- Neonatology

TANEO **OPTICLUX**

LABORATORY

- Laboratory workstations



● ideally suitable

○ well suited

	TRIANGO 130	TRIANGO 100	TRIANGO 80	TRIANGO 60	VISIANO 20	VISIANO 10	HALUX 50	HALUX 30	OPTICLUX Hand	OPTICLUX	AMALIA	CULTA	TANEO

Surgery													
• Minor procedure	●	●	●	○									
• Outpatient surgery	●	●	●	○									
• Endoscopy	●	●	●	○									
• Delivery	●	●	●	○									
• Minor surgery	●	●	●	○									
Surgery preparation													
• Anesthesia	○	○	○	○	○	○	○						
Emergency													
• Trauma room	●	●	●	○	○		○						
Examination													
• General medicine	○	○	○	●	●	●	●	○	●	●			
• Dermatology	○	○	○	●	●	●	●	○	●	●			
• Neonatology	○	○	○	○	○	○	○	○	○	○			
• Pediatrics	○	○	○	○	○	○	○	○	○	○			
Special. examination													
• Gynecology / Obstetrics	●	●	○	○	○		○	●					
• Urology	●	●	○	○	○		○	●					
• Orthopedics	●	●	○	○	○		○	●					
Plastic Surgery	●	●	●										
Intensive care				○	○	●	●	○					
Laboratory										●			●
Patient bed							●	●			●	●	
Light intensity	130,000 Lux @ 1.0 m	100,000 Lux @ 1.0 m	80,000 Lux @ 1.0 m	60,000 Lux @ 1.0 m	60,000 Lux @ 0.5 m	50,000 Lux @ 0.5 m	50,000 Lux @ 0.5 m	30,000 Lux @ 0.5 m	8,000 Lux @ 0.15 m	6,000 Lux @ 0.15 m	1,000 Lux @ 0.5 m	1,100 Lux @ 0.5 m	1,400 / 2,000 Lumen

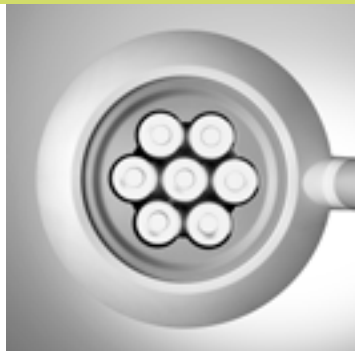
Fastening

	Ceiling	✓	✓	✓	✓	✓				✓			
	CeilingDuo Arm system	✓	✓										
	Wall	✓	✓	✓	✓	✓	✓	✓		✓			
	Mobile rolling stand	✓	✓	✓	✓	✓	✓	✓		✓			
	Rolling stand UPSmed pack		✓	✓	✓								
	Pin universal					✓	✓	✓	✓	✓	✓	✓	✓
	Hand lamp								✓				

Accessories

	Rail mount, wall mount				✓	✓	✓	✓		✓	✓	✓	
	Table clamp, universal fastening				✓	✓	✓	✓		✓	✓	✓	
	Rolling stand				✓	✓	✓	✓		✓			

Product range



The daily routine can be simplified with the optimal lighting. Derungs medical luminaires combine innovative lighting technology with elegant design.





Surgery lights



Light & ergonomics

Thanks to high quality LED technology, colours are optimally reproduced and the work area is illuminated homogeneously and flicker-free. High-quality arm systems with a large radius of movement and exact positioning ensure simple and ergonomic operation.

TRIANGO 130 (Duo)



TRIANGO 100 (Duo)



TRIANGO 80



TRIANGO 60



www.derungs.swiss
Further variants and technical
notes can be found here.

TRIANGO 130

Duo



Das Premium Doppelleuchtensystem. TRIANGO 130 Duo

The light offers exceptional lighting properties of 2x 130 000 lux at a distance of 1 meter – impressive. To provide more flexibility and better illumination, two working areas are equipped with shadow-free light. The TRIANGO 130 Duo thus fills an important gap between medical lights and surgical lighting systems.



TRIANGO 130 Duo	Technical data
luminous power *	2 x 130 000 Lux / 1.0 m
colour temperature *	adjustable: 3700 K / 4300 K / 4700 K
illuminated area @ 1.0 m *	focusable: 16 / 20 / 25 cm
depth of illumination *	170 cm
colour rendering index	Ra > 96
usage	touch panel on cardanic system
class of protection	I
protection rating	IP 20 IP 43 (horizontal position)

Special features	
TRIANGO Fokus 130-3	<ul style="list-style-type: none"> • 4-step dimmable (100% / 80% / 60% / 40%) * • 3 colour temperatures • focusable
fastening	<ul style="list-style-type: none"> • ceiling (duo)
accessories	<ul style="list-style-type: none"> • sterilizable surgical handle • disposable sterile handle cover

* -10% / +20% tolerance

TRIANGO 130 Duo



First-Class Lighting

The specially developed diamond optics relieve eye strain and ensure optimal color homogeneity. Each light head provides 130,000 lux at a distance of one meter. The membrane keyboard allows for individual adjustment of the light intensity. In this model, the illuminated area can also be focused (16 / 20 / 25 cm) and used with different color temperatures (3700 K / 4300 K / 4700 K).

High Mobility

The high-quality support arm system offers perfect mobility: an exceptional range of motion of over 180 cm, joints with 360° rotation, and a large movement angle. The aluminum frame is especially durable and easy to maintain.

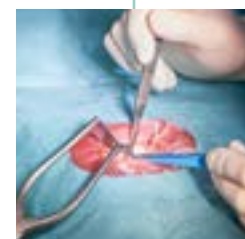
Product highlights



Duo Ceiling Light
enables procedures on two treatment fields. Can also be used in rooms with low ceiling heights.



Parallel-Mounted Arm Connection
perfect mobility with a wide range of motion



Homogeneous and Low-Shadow
Adjustable lighting field with focus options: 16 cm, 20 cm, and 25 cm.

TRIANGO 130



The flagship of surgical lights. TRIANGO 130

The first-class solution for optimal lighting during small procedures and medical treatments. With an impressive 130 000 lux at one metre, the TRIANGO 130 provides maximum light to meet your requirements. This luminaire sets new standards in brightness and precision.



TRIANGO 130	Technical data
luminous power *	130 000 Lux / 1.0 m
colour temperature *	adjustable: 3700 K / 4300 K / 4700 K
Illuminated area @ 1.0 m *	focusable: 16 / 20 / 25 cm
depth of illumination *	170 cm
colour rendering index	Ra > 96
usage	touch panel on cardanic system
class of protection	I
protection rating	IP 20 IP 43 (horizontal position)



Special features	
TRIANGO Fokus 130-3	<ul style="list-style-type: none"> • 4-step dimmable (100% / 80% / 60% / 40%) * • 3 colour temperatures • focusable
fastening	<ul style="list-style-type: none"> • ceiling • wall • roller stand
accessories	<ul style="list-style-type: none"> • sterilizable surgical handle • disposable sterile handle cover

TRIANGO 130 – VARIATIONS



TRIANGO 130 C
ceiling version



TRIANGO 130 W
wall mount



TRIANGO 130 F
roller stand



Maximum brightness

130,000 lux at one metre - this impressive light level ensures optimum visibility and enables maximum precision during procedures and medical treatments. The three-stage focussing function provides additional support. The TRIANGO 130 is a highlight in terms of form and function.

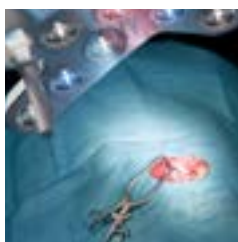
Cost efficient

Whether for use in hospitals, private clinics or in veterinary medicine, the TRIANGO 130 entirely fulfils the requirements for the desired brightness and no additional, expensive alternatives are required. The luminaire is easy to clean and offers a long service life.

Product highlights



Ideal colour temperature
optionally in three levels adjustable (3700 K / 4300 K / 4700 K)



Individually adjustable
focusable to 16 / 20 / 25 cm and 4-level dimmable



Intuitive operation
simple and within easy reach via touch panel



Unique arm system
high positional accuracy and large action radius



TRIANGO 100



reddot winner 2020

Select equipment. Perfect vision. TRIANGO 100

With its outstanding light output of 100,000 lux at one meter, it is particularly suitable for treatments, surgical interventions or in-depth examinations. Thanks to first-class colour rendering properties and LEDs in two different light colours, it also supports medical professionals in areas such as dermatology, gynecology and urology.



TRIANGO 100	Technical data
luminous power *	100 000 Lux @ 1.0 m duo: 2x 100 000 Lux @ 1.0 m
colour temperature *	fixed: 4300 K adjustable: 3700 K / 4300 K / 4700 K
Illuminated area @ 1.0 m *	fixed: Ø 18 cm focusable: 18 / 23 / 28 cm
depth of illumination *	80 cm
colour rendering index	Ra > 96
usage	touch panel on cardanic system
class of protection	I
protection rating	IP 43 (luminaire head) IP 20 (UPSmed pack)



Special features	
TRIANGO 100-1	<ul style="list-style-type: none"> • 4-step dimmable (100% / 80% / 60% / 40%) *
TRIANGO 100-3	<ul style="list-style-type: none"> • 4-step dimmable (100% / 80% / 60% / 40%) * • 3 colour temperatures
TRIANGO Fokus 100-1	<ul style="list-style-type: none"> • 4-step dimmable (100% / 80% / 60% / 40%) * • focusable
TRIANGO Fokus 100-3	<ul style="list-style-type: none"> • 4-step dimmable (100% / 80% / 60% / 40%) * • focusable • 3 colour temperatures
TRIANGO Endo 100-1	<ul style="list-style-type: none"> • 4-step dimmable (100% / 80% / 60% / 40%) * • Endo Mode
fastening	<ul style="list-style-type: none"> • ceiling (duo) • wall • roller stand • roller stand with BATTERY

TRIANGO 100 – VARIATIONS



TRIANGO 100 C
ceiling version



TRIANGO 100 C Duo
ceiling version duo



TRIANGO 100 W
wall mount



TRIANGO 100 F
roller stand



TRIANGO 100 F BATTERY
roller stand with Battery



Model with endo mode

When the doctor is performing an endoscopic procedure, the illuminance must be adjusted so that the view of the monitor is not obstructed by glare or reflection.

Optional: focusable light field

An adjustable light field gives every physician great flexibility in everyday work. Depending on the size of the treatment area, the light can be optimally adjusted. Especially for treatments on the patient's face, a smaller light field protects the patient from glare. For larger treatment areas, it is not necessary to to realign the luminaire.

Product highlights



Ideal colour temperature
optionally in three levels adjustable (3700 K / 4300 K / 4700 K)*



Unique arm system
high positional accuracy and large action radius



Diamond shaped optics
for highest light quality



Intuitive operation
simple and within easy reach via touch panel

TRIANGO 80



reddot winner 2012

A proven classic. TRIANGO 80

With 80,000 lux at a distance of one meter and a light field diameter of 18 cm, the medical staff has a powerful surgical light at its disposal. The illumination field is pleasantly homogeneous and continuously dimmable. The arm system enables simple and accurate alignment of the lamp head position. The sterilizable surgical handle makes it easy for right-handed and left-handed users to position the light.



TRIANGO 80	Technical data
luminous power *	80 000 Lux @ 1.0 m
colour temperature *	ca. 4500 K
illuminated area @ 1.0 m *	Ø 18 cm
depth of illumination	124 cm
colour rendering index	Ra > 95
usage	rotary switch on the luminaire head
class of protection	I
protection rating	IP 43 (luminaire head) IP 20 (UPSmed pack)

Special features	
TRIANGO 80-1	<ul style="list-style-type: none"> continuously dimmable (40-100%) *
fastening	<ul style="list-style-type: none"> ceiling wall roller stand roller stand UPSmed pack

TRIANGO 80 – VARIATIONS



TRIANGO 80 C
ceiling version



TRIANGO 80 W
wall mount



TRIANGO 80 F
roller stand



TRIANGO 80 F BATTERY
roller stand with Battery



TRIANGO 60



The compact one that has what it takes. TRIANGO 60

Since summer 2023, the TRIANGO 60 has enriched the range of lights for minor procedures and treatments. Its minimalist design is striking. Thanks to an intuitive pushbutton, the illuminance of 60,000 lux at 1m can be continuously adjusted. It is suitable for the versatile daily routine in family practices and clinics as well as in gynecology, dermatology or veterinary medicine.



TRIANGO 60	Technical data
luminous power *	60 000 Lux @ 1.0 m
colour temperature *	fixed: 4 700 K adjustable: 3 700 K / 4 300 K / 4 700 K
Illuminated area @ 1.0 m *	fixed: Ø 18 cm adjustable: Ø 18 / 23 / 25 cm
depth of illumination *	140 cm
colour rendering index *	Ra > 95
usage	touch panel on cardanic system
class of protection	I
protection rating	IP 43 (illumination head) IP 20 (UPSmed pack)



Special features	
TRIANGO 60-1	<ul style="list-style-type: none"> continuously dimmable (15-100%) *
TRIANGO 60-3	<ul style="list-style-type: none"> continuously dimmable (15-100%) * 3 colour temperatures
TRIANGO Fokus 60-1	<ul style="list-style-type: none"> continuously dimmable (15-100%) * focusable
fastening	<ul style="list-style-type: none"> ceiling wall roller stand roller stand UPSmed pack

TRIANGO 60 – VARIATIONS



TRIANGO 60 C

ceiling version



TRIANGO 60 W

wall mount



TRIANGO 60 F

roller stand



TRIANGO 60 F BATTERY

roller stand with Battery



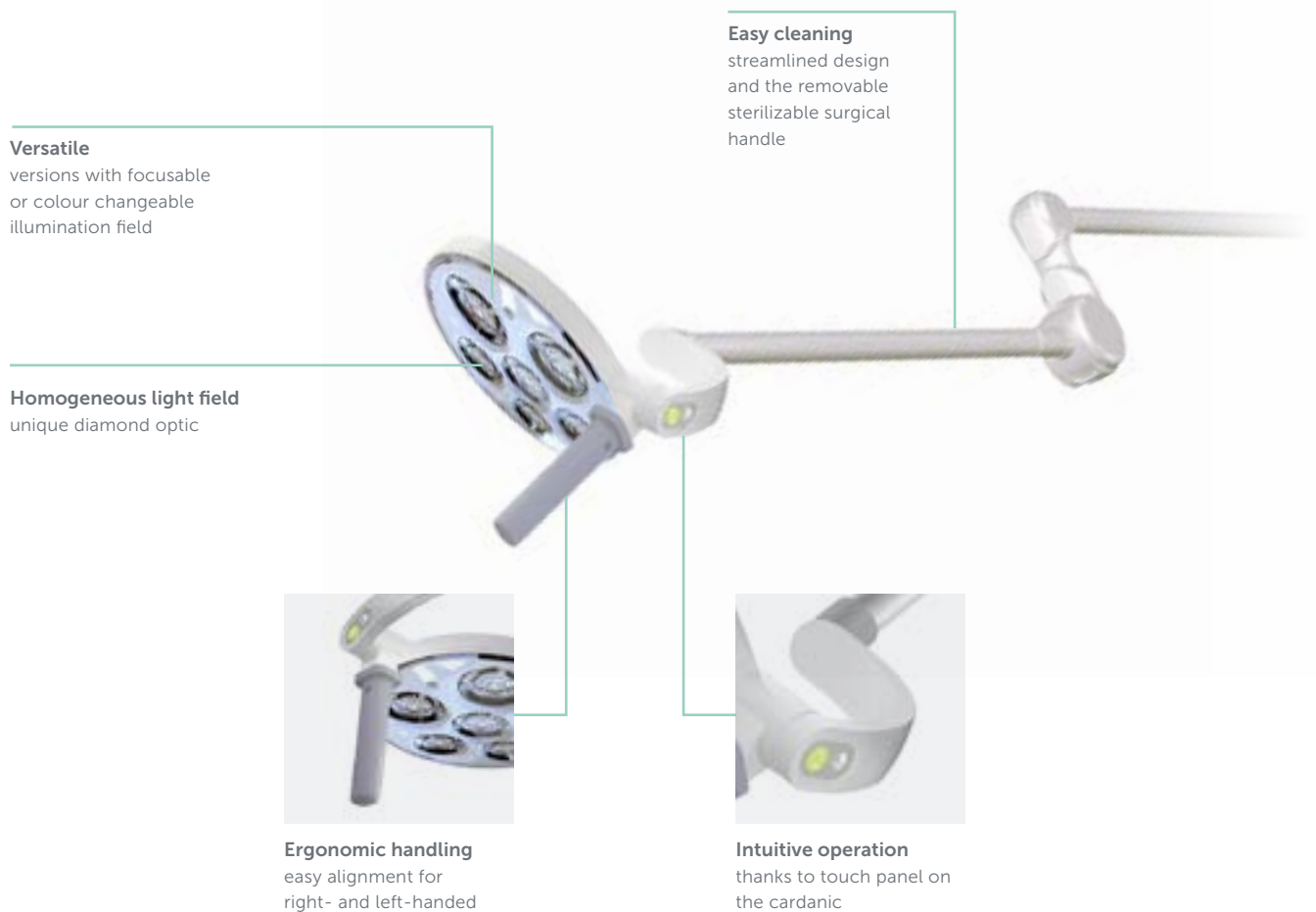
Variable mounting options

Whether mounted on the ceiling, on the wall or on the Derungs roller stand – TRIANGO 60 can be used wherever its homogeneous light field is needed. And in the event of faults in the input power source or mains power, the TRIANGO 60 BATTERY provides an uninterrupted power supply so that it can continue to light up without interference.

Hygiene made simple

Good design dispenses with unnecessary details and places value on building structures that are as self-contained as possible. The benefit of this is that our TRIANGO 60 can be cleaned very quickly and effectively. A real plus in everyday practice.

Product highlights



Examination lighting



Design and lighting technology

Versatile examination lights are used for specific illumination of the patient's body. They are coordinated in terms of illuminance, light colour and colour rendering to support diagnosis. The special design of the Derungs medical luminaires blends elegantly into the architecture of clinics and hospitals.

VISIANO 20



VISIANO 10



HALUX N50



HALUX N30



www.derungs.swiss
Further variants and technical
notes can be found here.

VISIANO 20



reddot winner 2014

Outstanding in design and function. VISIANO 20

The VISIANO 20 is the premium product for general examinations. The light output of 60,000 lux at a distance of 0.5 m is outstanding in this class. This makes it suitable for versatile applications: general medicine, dermatology, gynecology, urology, neonatology and anesthesia. But also in intensive care, emergency and in the preparation for surgery, it provides excellent illumination and LEDs in two different light colours.



VISIANO 20	Technical data
luminous power *	60 000 Lux @ 0.5 m
colour temperature *	3500 K & 4500 K
Illuminated area @ 1.0 m *	Ø 21 cm
colour rendering index	Ra > 95
usage	touch panel on light head
class of protection	ceiling version: I pin version: II
protection rating	IP 20

Special features	
VISIANO 20-2	<ul style="list-style-type: none"> • 2 colour temperatures • dimmable
fastening	<ul style="list-style-type: none"> • ceiling • pin universal
accessories	<ul style="list-style-type: none"> • wall mount • roller stand • fastening hardware • universal mount • table clamp

VISIANO 20 – VARIATIONS

VISIANO 20 C

ceiling version



VISIANO 20 P

pin version



Versatile use

The mounting options leave nothing to be desired: The VISIANO Pin version can be combined with versatile accessories e.g. roller stand, rail mount, wall mount. The ceiling version rounds off the mounting options.

High quality lighting technology

VISIANO 20 is equipped with LEDs in two colour temperatures as standard. The special optics provide a glare-free and homogeneous illumination field. High-quality materials and long-life LEDs ensure a flawless use.

Product highlights



Colour change
for optimal contrast vision



Unique diamond optic
for best colour homogeneity of the light



360° turnover axis
for maximum light availability



Spring-relieved friction joint
for secure hold



VISIANO 10



Reduced to the essentials. VISIANO 10

The VISIANO 10 is an examination light that is reduced to the essentials, but still delivers professional lighting technology. The illuminance, with 50,000 lux at a distance of 0.5 m, is suitable for general examinations but also for intensive care and neonatology. The ergonomic handle makes it easy to align the light field.



VISIANO 10	Technical data
luminous power *	50 000 Lux @ 0.5 m
colour temperature *	4400 K
Illuminated area @ 1.0 m *	Ø 18 cm
colour rendering index	Ra > 96
usage	rocker switch (I/O) on arm
class of protection	II
protection rating	IP 20



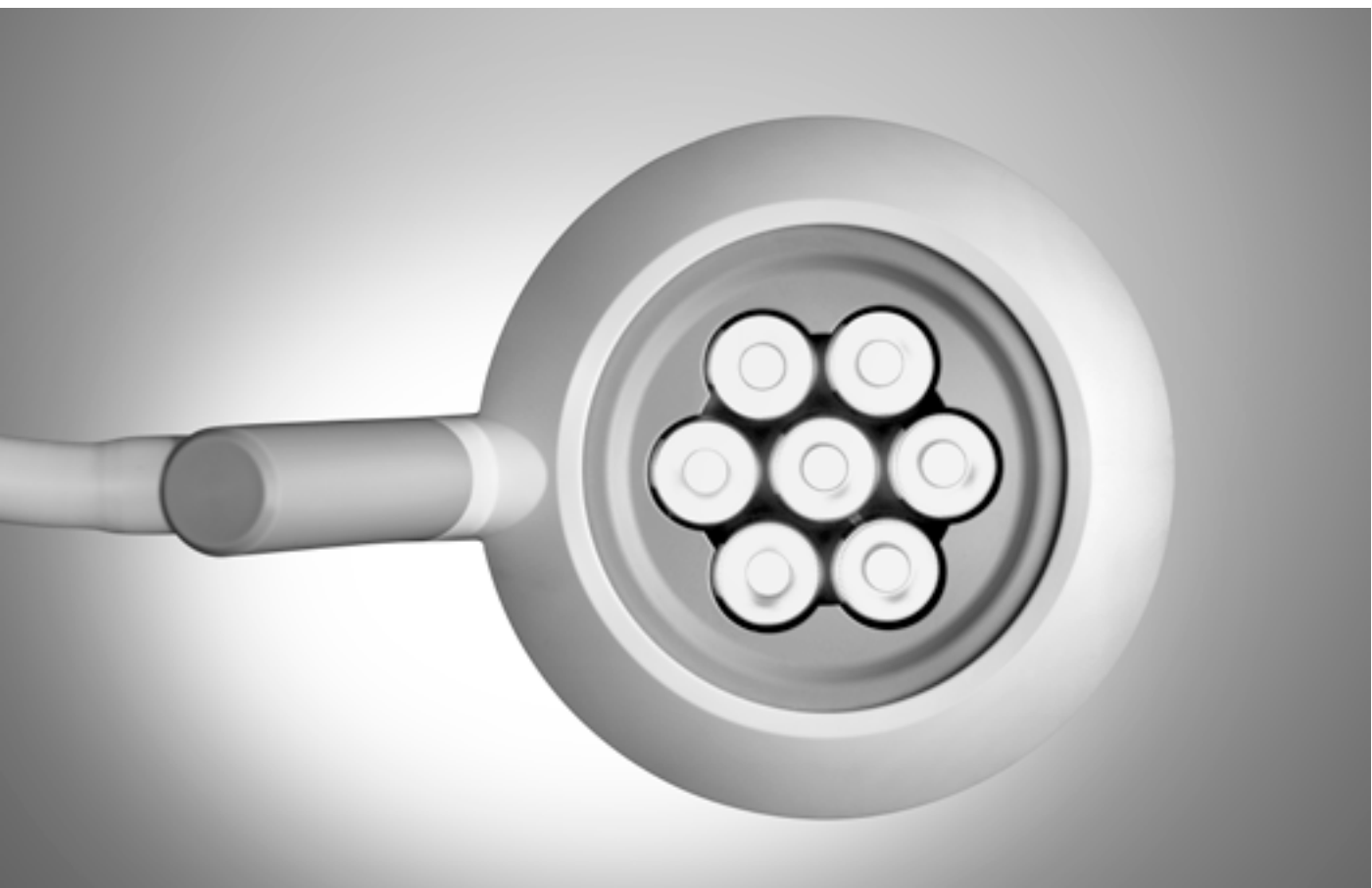
Special features	
VISIANO 10-1 P S10	<ul style="list-style-type: none"> • handle • luminaire head can be swivelled 280°
fastening	<ul style="list-style-type: none"> • pin universal
accessories	<ul style="list-style-type: none"> • wall mount • roller stand • fastening hardware • universal mount • table clamp

VISIANO 10 – VARIATIONS



VISIANO 10 P

pin version with accessory roller stand



Various connections

The VISIANO 10 can be combined with Derungs accessories. Depending on the requirements, it can be fixed directly to the wall with a wall mount or a rail mount. The Derungs roller stand is suitable for mobile use.

Easy cleaning

Thanks to its closed and minimalistic design, the VISIANO 10 can be cleaned in a time-saving manner. Dust and liquids cannot enter the interior. This means that nothing stands in the way of long-lasting use.

Product highlights



Economical
due to low energy consumption and high-quality components



Durable flex arm
for safe positioning and durable use



Large radius of action
thanks to 280° rotatable lamp head and special arm

HALUX N50



Versatile classic. HALUX N50

HALUX N50 is the right luminaire for anyone looking for good lighting quality. The illuminance of up to 50,000 lux at 0.5 m and the 18 cm large light field provide optimal examination conditions. It is versatile for examinations in dermatology, intensive care, neonatology, gynecology, obstetrics or urology, but also at the patients bedside or for the preparation of a surgical procedure.



HALUX N50	Technical data
luminous power *	50 000 Lux @ 0.5 m
colour temperature *	fixed: 4400 K adjustable: 3300 K / 3800 K / 4400 K **
Illuminated area @ 0.5 m *	Ø 18 cm
colour rendering index	Ra > 98
usage	touch panel on luminaire head or rocker switch (I/O)
class of protection	II
protection rating	IP 20 (luminaire head)

Special features	
HALUX N50	<ul style="list-style-type: none"> • 3 colour temperatures ** • 5-stage dimmable **
variations	<ul style="list-style-type: none"> • gynecology
fastening	<ul style="list-style-type: none"> • pin universal • wall mount • roller stand
accessories	<ul style="list-style-type: none"> • rail clamp • universal mount • table clamp

*-10% / +20% tolerance
**optional

HALUX N50 – VARIATIONS



HALUX N50 P FX
pin version with spring arm



HALUX N50 P SX
pin version with flexarm



Large assortment

HALUX N50 impresses with a well thought out variety: with a robust flexible arm or a positionally stable spring arm, LEDs with defined or adjustable colour temperatures and various mounting options. A special version for connection to the examination chair in gynecology and proctology is also available.

Durable use

High-quality materials and long-life LEDs ensure a lawless use. The closed design facilitates cleaning and prevents the penetration of cleaning agents into the luminaire head.

Product highlights



Individual light intensity
thanks to 5-stage dimming the light is easily adjustable



Perfect colour rendering
optimum light colour for precise and accurate diagnoses



Optimal contrast vision
optional: 3 colour levels for detail fidelity as well as perfect contrasts

3300 K | 3800 K | 4400 K

HALUX N30



Small but mighty! HALUX N30

The HALUX N30 is a solid examination fixture with uncompromisingly good light and a very attractive price. The illumination field has a diameter of 18 cm and an illuminance of up to 30,000 lux at 0.5 m which makes it perfectly equipped for the versatile daily routine in the clinic. The good colour rendering properties and the stepless dimming function offer high functionality.



HALUX N30	Technical data
luminous power *	30 000 Lux @ 0.5 m
colour temperature *	4400 K
Illuminated area @ 1.0 m *	Ø 18 cm
colour rendering index	Ra > 94
usage	touch panel on luminaire head
class of protection	II
protection rating	IP 20

Special features	
HALUX N30	<ul style="list-style-type: none"> continuously dimmable spring arm
variations	<ul style="list-style-type: none"> gynecology ambulance
fastening	<ul style="list-style-type: none"> pin universal roller stand wall mount roller stand
accessories	<ul style="list-style-type: none"> fasting hardware universal mount table clamp

HALUX N30 – VARIATIONS



Variety of versions

The HALUX N30 is available in different versions. Depending on your requirements, it can be mounted directly on the wall or fixed to a rail mount with a rail clamp. The ambulance version can be mounted on C-rails. The gynecology version is suitable for connection to the gynecology chair.

Conceivably simple

The 18 cm large illumination field can be easily controlled via the touch panel on the luminaire head. The illuminance can be dimmed steplessly to adapt to the lighting requirements. Cleaning is also simple. This is ensured by the seamless design.

HALUX N30 P SGH

pin version with flex arm with foot joint



HALUX N30 P SGV

pin version with flex arm with foot joint



HALUX N30 P SH

pin version with flex arm



HALUX N30 P SV

pin version with flex arm



HALUX N30 – VARIATIONS



HALUX N30 P F1

pin version with spring arm and foot joint



HALUX N30 P Amb

pin version with flex arm for ambulance



HALUX N30 F

rolling stand with cable



HALUX N50 & N30 – GYNECOLOGY



Lighting solutions for gynecology & urology

We support gynecological and urological clinics as well as proctologists with optimal light. Very good colour rendering properties with Ra values > 94 ensure a natural representation of visible pathologies, tissue and vessels. Unobtrusive spotlights on the examination chair provide ideal light for patient examination.

HALUX N50-3 P SX Gyn

pin version with flex arm for gynecology



- 50 000 Lux @ 0.5 m
- optional: 5-stage dimmable
- adjustable colour temperature (3 300 / 3 800 / 4 400 K)



Securely fastened

rail clamp with brake function

HALUX N30-1 P SGV Gyn

pin version with flex arm for gynecology



- 30 000 Lux @ 0.5m
- continuously dimmable illumination field with head connection vertical/horizontal
- colour temperature fixed 4400 K



Optimal vision

thanks to homogeneous, spot-like illumination field

Magnifier lumineuses



Details make the difference.

Magnifier luminaires from Derungs provide valuable support in many areas. They are suitable for dermatologists, dental technicians, laboratories, central steril supply department (CSSD), veterinarians as well as medical clinics and hospitals. OPTICLUX magnifier lamps offer a perfect symbiosis of outstanding light, a large field of vision and a distortion-free representation of the object. This relieves the eyes and makes visual tasks easier.

OPTICLUX Hand



OPTICLUX 10



www.derungs.swiss
Further variants and technical
notes can be found here.

OPTICLUX Hand



reddot winner 2021

Strikingly different. OPTICLUX Hand

The OPTICLUX Hand magnifier luminaire with ergonomic handle provides support for demanding visual tasks. This is ensured by the large dimmable light field in daylight quality, excellent colour rendering properties and long battery life. Dermatologists and veterinarians can look forward to the powerful Wood's Light, which is available as an option in combination with the daylight mode.



OPTICLUX Hand	Technical data
luminous power *	8,000 Lux @ 0.15 m
colour temperature *	<ul style="list-style-type: none"> • 6500 K • 365 nm (Wood's Light)**
lens dimension	Ø 16 cm
colour rendering index	Ra > 95, R9 > 93
usage	touch panel on handle
battery runtime	up to 3h
class of protection	II
protection rating	IP 20



Special features
<ul style="list-style-type: none"> • dimmable • rechargeable battery with USB-C charging interface
OPTICLUX Hand
<ul style="list-style-type: none"> • Wood's Light mode** • lens cover • 1.9x magnification
variations
<ul style="list-style-type: none"> • battery operated handheld version

*-10% / +20% tolerance

**optional

OPTICLUX Hand – VARIATIONS



OPTICLUX Hand
Daylight and Wood's light



OPTICLUX Hand + Table charger
setprice available



First class light

The OPTICLUX hand magnifier light delivers unique light output of 8,000 lux at a distance of 15 cm. Excellent colour rendering properties Ra > 95 ensure ideal vision.

Large field of view

The scratch-resistant plastic lens with 160 mm diameter and 3.5 diopters is ideal for full-body examinations and for assessing dermatological diseases on patients.

Product highlights



Optional with Wood's Light

two lighting modes in one device: optional Wood's Light for examination of fungal or bacterial infection on the skin or scalp and pigmentary changes.

A detailed description of Wood's Light can be found at the end of the catalog.



Ergonomic
optimal handling for right- and left-handed



Table charging station
for storage and charging, white powder-coated with a sturdy aluminium base



Easy to operate
touch panel on the handle with comfortable, stepless dimming



Battery operated
up to 3 hours battery runtime, flexible charging through USB-C interface

OPTICLUX 10



reddot winner 2018

i-NOVO[®]
AWARDS
2017

Details shown in the best light. OPTICLUX 10

The OPTICLUX 10 magnifier light combines a robust magnifier with outstanding light quality and ergonomic operation. As a certified medical product, it is used in dermatology, in clinics and hospitals for human, dental and veterinary medicine, in laboratories and veterinary medicine, in laboratories, but also for central steril supply department (CSSD).



OPTICLUX 10	Technical data
luminous power *	6,000 Lux @ 0.15 m
colour temperature *	<ul style="list-style-type: none"> • 6500 K • 365 nm (Wood's Light)**
lens dimension	Ø 16 cm
colour rendering index	Ra > 95, R9 > 91
usage	membrane switch on light head
class of protection	<ul style="list-style-type: none"> • Ceiling version: I • Pin version: II
protection rating	IP 20

Special features
OPTICLUX 10 <ul style="list-style-type: none"> • dimmable • Wood's Light mode** • lens cover • 1.9x magnification
variations <ul style="list-style-type: none"> • Further connector variants are available on request.
accessories <ul style="list-style-type: none"> • table clamp • universal mount • fasting hardware • wall mount • roller stand

*-10% / +20% tolerance

**optional

OPTICLUX 10 – VARIATIONS



OPTICLUX 10 C
ceiling version



OPTICLUX 10 P
pin version



Product highlights



Optimally protected
sturdy plastic cover
protects the lens from
scratches and sunlight

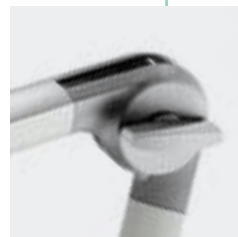


360° turnover axis
for maximum light
availability

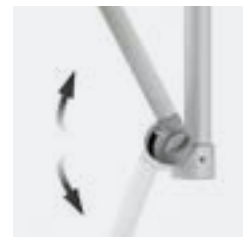


Especially for dermatology
two illumination modes in one device:
optional Wood's Light for examination of
fluorescent fungal or bacterial infection on
the skin or scalp and pigmentary changes.

A detailed description of Wood's Light can
be found at the end of the catalog.



Ergonomic handling
spring arm and internal
friction joints allow
comfortable handling
without any risk of the
light head drifting



Flexible positioning
long lamp arm makes a
large radius of action up
to 142 cm possible

Care lights



Pleasant and glare-free vision

Derungs Care lights are characterized by a pleasant lighting effect, good cleaning properties and high functionality. They are universally applicable on standard rails or bed motor controls. Further mounting accessories and model variants round off the possibilities.

AMALIA



CULTA LED



www.derungs.swiss
Further variants and technical
notes can be found here.

AMALIA



reddot winner 2012

Reading and orientation. AMALIA

The reading lamp AMALIA offers a pleasing aesthetic design and functionality. The homogeneous care light increases the reading comfort at the patient's bedside or in the resident's room. An additional night light facilitates orientation. High-quality materials and excellent workmanship reduce maintenance costs and increase cost-effectiveness.



AMALIA	Technical data
luminous power *	1 000 Lux @ 0.5 m
colour temperature *	3000 K
Illuminated area @ 0.5 m *	Ø 45 cm
colour rendering index	Ra > 95, R9 > 90
usage	switch on the handle
class of protection	II
protection rating	IP 20

Special features	
AMALIA	<ul style="list-style-type: none"> • Turnover axis (360° turnover axis) • night light (LED) • with removal protection • lampshade: white • luminaire decor: foil / rattan
fastening	<ul style="list-style-type: none"> • pin universal • floor lamp
accessories	<ul style="list-style-type: none"> • wall mount • roller stand • fastening hardware • universal mount • table clamp

AMALIA – VARIATIONS



AMALIA 9 P S4

pin version | spring arm ankle joint



AMALIA 9 PS 4 CLINIC

pure white care light



AMALIA 9 P S7

care light



AMALIA 9 B S8

care light



AMALIA 9 F S3

floor lamp



Versatile application

Thanks to Derungs accessories, AMALIA care lights can be easily attached to a wall, rail, table or bed. A special CLINIC version for hospitals and clinics in pure white expands the range.

Durable use

High-quality materials, efficient light sources and the high quality of workmanship contribute to the efficiency. AMALIA offers user-friendly handling. The closed construction and smooth surface guarantee quick and hygienic cleaning.

Product highlights



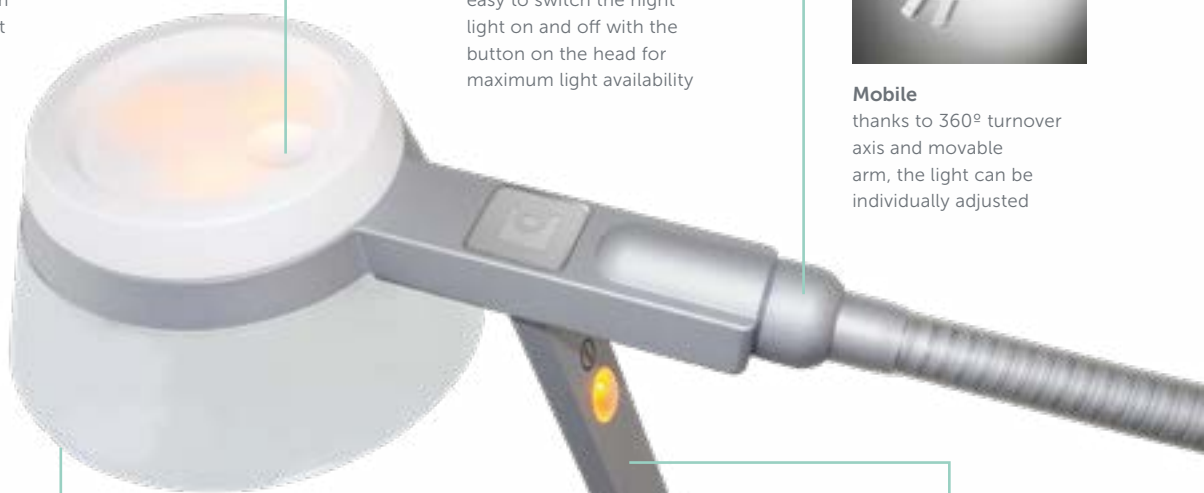
LED lighting technology
with 1,000 Lux @ 0.5 m
AMALIA offers pleasant lighting conditions with very good colour rendering



Soothing
easy to switch the night light on and off with the button on the head for maximum light availability



Mobile
thanks to 360° turnover axis and movable arm, the light can be individually adjusted



Decorative
Additional lampshade decors for an even homelier ambience



Robust handle
switch on and off via button on handle

CULTA LED



reddot winner 2012

Small luminaire. Big personality. CULTA LED

The bedside reading lamp CULTA LED is characterized by its minimalist appearance and its solid construction. The cord switch makes it particularly easy to use, especially for people with limited mobility. Positioning the CULTA LED is very easy. The large illumination field has a pleasant light colour and provides ideal light for reading and relaxing.



CULTA LED	Technical data
luminous power *	1 100 Lux @ 0.5 m
colour temperature *	3000 K
Illuminated area @ 0.5 m *	Ø 60 cm
colour rendering index	Ra > 80
usage	rocker switch (I/O) on cord
class of protection	II
protection rating	IP 20

Special features	
CULTA LED	<ul style="list-style-type: none"> lampshade white
mounting	<ul style="list-style-type: none"> pin universal
accessories	<ul style="list-style-type: none"> fasting hardware wall mount table clamp

CULTA LED – VARIATIONS



CULTA LED S4 P 23

pin version



CULTA LED S4 B S9

universal bed adapter



Practical and durable

The flexible gooseneck and the rotatable head of the CULTA LED bedside reading lamp ensure that the light can be directed easily and precisely. The large light field has a pleasant light colour and provides comfortable light for reading.

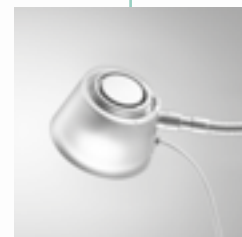
Universally applicable

In residents' and patients' rooms, the CULTA LED can be used universally on rails, tables or walls. The CULTA LED S 4 B S9 version can be mounted directly on the bed with optional connection to a bed motor control.

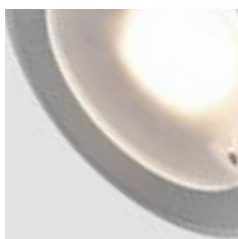
Product highlights



Hygiene
simple and closed construction
facilitates cleaning



Elegant design
transparent lampshade
appears noble and harmonizes
with any furnishing style



Retrofit illuminant
replaceable

Intuitive operation
thanks to cord switch,
can also be operated with
limited mobility

Laboratory luminaires



Light at the workplace

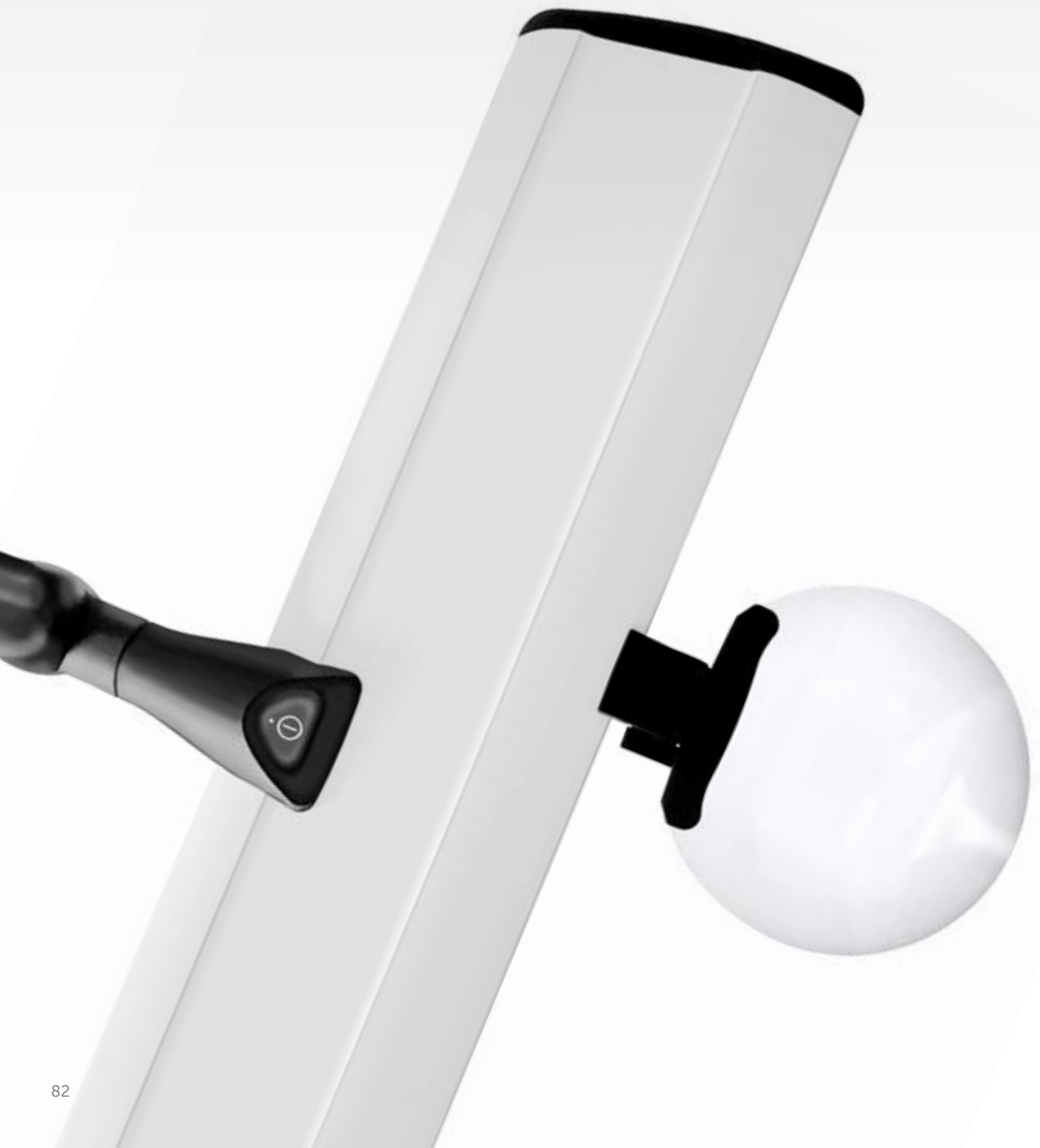
Optimal working conditions are created by light that adapts to personal requirements. Excellent colour rendering properties of light are indispensable to obtain optimal working conditions. TANEEO Lab luminaires meet the special needs of technicians e.g. dental technicians.

TANEEO Lab



www.derungs.swiss
Further variants and technical
notes can be found here.

TANEO Lab



Colour determination in daylight quality. TANEO Lab

The TANEO Lab is an all-round talent with optimal light. The high quality of light and ergonomic handling are ideal for dental laboratories. TANEO Lab offers individual adjustment possibilities with its uniquely movable and balanced arm with a large radius of action. Thanks to the first-class colour rendering properties, contrasts and colours are optimally displayed.



TANEO Lab	Technical data **
luminous power *	1 400 - 2 000 lm
colour temperature *	5 000 K / 3 000 - 6 500 K Tunable White / full spectrum D50
colour rendering index	Ra > 90
usage	membrane switch
class of protection	II
protection rating	IP 20

Special features	
TANEO Lab 23-5 000 TANEO Lab 30-5 000	<ul style="list-style-type: none"> • high colour rendering property • withdrawal protection
TANEO Lab 30-Tunable White	<ul style="list-style-type: none"> • Tunable White: adjustable colour temperature 3000-6500 K
TANEO Lab 38-D50	<ul style="list-style-type: none"> • full spectrum, Ra > 95, R9 > 85
mounting	<ul style="list-style-type: none"> • pin universal • table clamp • universal mount
accessories	<ul style="list-style-type: none"> • extension arm with removal protection • wall mount

*-10% / +20% tolerance

**for TANEO Lab 23-5 000, 398 mm

TANEO Lab – VARIATIONS



TANEO Lab

23-5000: width 398 mm



TANEO Lab

30-5000 / 30-tunable white / 38-D50: width 577 mm



AGR certified
ergonomically optimised
for gentle work in an
upright, back-friendly
posture

Product highlights



Intuitive operation
switch in the luminaire head for on / off and dimming



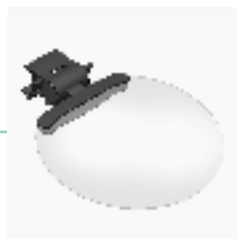
Reliable positioning
spring arm with 3D head joint for stable alignment of the illumination field



High quality
white housing made of anodised aluminium and black plastic



Different colour temperatures
version with full spectrum D50, Tunable White or 5000 K available



Additional magnifying lens
easy to install thanks to a clip, 3.5 dioptries (approx. 1.9x magnification), lens diameter 132 mm

Universal connection
by means of included screw-on flange, extensive accessories available for mounting by means of table clamp, universal mounting, wall bracket or extension arm

Accessories



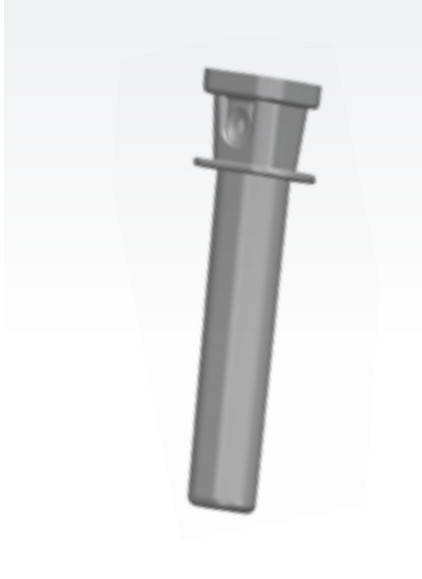


ACCESSORIES



Sterilizable surgical handle

TRIANGO 130, TRIANGO 100 & TRIANGO 60



Handle

TRIANGO 130, TRIANGO 100 & TRIANGO 60



Sterilizable surgical handle

TRIANGO 80



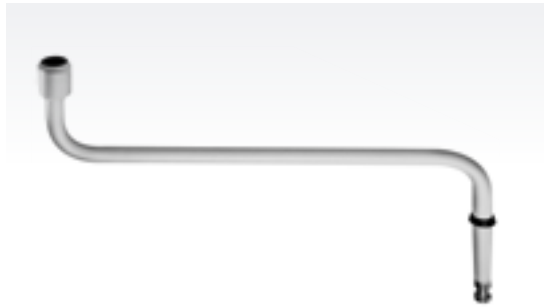
Disposable cover

for all TRIANGO handles



Extension arm

- for VISIANO 20, VISIANO 10, HALUX N50 / N30, OPTICLUX 10
- for luminaires with 16 mm pin attachment



Tubular Mount

for round and oval profiles
ø 30 mm to 40 mm



ACCESSORIES



for luminaires with 16 mm pin attachment

Table clamp

for VISIANO 20, VISIANO 10,
HALUX N50 / N30, OPTICLUX, AMALIA



Universal mount

for VISIANO 20, VISIANO 10,
HALUX N50 / N30, OPTICLUX, AMALIA



Rail mount

for VISIANO 20, VISIANO 10,
HALUX N50 / N30, OPTICLUX, AMALIA



Wall mount

for VISIANO 20, VISIANO 10,
HALUX N50 / N30, OPTICLUX, AMALIA



Wall mount aluminum

for VISIANO 20, VISIANO 10,
HALUX N50 / N30, OPTICLUX, AMALIA



Bedside adapter

- extension adapter
- for spigot Ø 16 mm with pull-out protection



ACCESSORIES



Aluminium rail

- 25 x 10 mm
- for VISIANO 20, VISIANO 10, HALUX N50 / N30, OPTICLUX 10, AMALIA



Roller stand

- for VISIANO 20, VISIANO 10, HALUX N50 / N30, OPTICLUX 10
- for luminaires with 16 mm pin attachment



Intermediate ceiling adapter

- for TRIANGO 130, TRIANGO 100, TRIANGO 80, TRIANGO 60, VISIANO 20, OPTICLUX 10



Rail mount gynecology chair

- for HALUX N50 / N30
- connection to gynecology chair
- for lights with 16 mm pin fastening with removal protection and brake function



Table charging station
for Opticlux Hand



Additional magnifier
for TANE0 Lab



Cover plate
100 mm / 385 mm



BATTERY - UPSmed Pack
Ideal for rolling stand



Support arm systems

.....





TENO



Many applications. High load capacity. One arm. TENO

The premium support arm system for medical applications. The spring arm is individually adjustable. Flat screens, patient multimedia systems and medical lights can be mounted almost independent of the payload. The high-quality aluminum arm system ensures good cleaning properties and a long service life.



TENO	Technical data
load capacity	max. 30 Nm
vertical angle of movement	+45° up / -65° down
joint relief	spring assembly
weight (net)	ca. 17.5 kg

Special features	
TENO	<ul style="list-style-type: none"> • can be positioned with little force • high positional accuracy • application specific load adjustment of up to 30 nm • easy mounting
fastening	<ul style="list-style-type: none"> • ceiling • pin • roller stand

TENO C Duo



TENO - VARIATIONS



TENO C Duo
Duo system



TENO C
ceiling version



TENO W
wall version



TENO F
roller stand



VISO



Reliable and solid. VISO

VISO is a proven support arm system with an integrated converter. At the same time, the aluminium arm and spring-relieved friction joints ensure effortless and safe positioning. VISO is designed for rather light loads.



TENO	Technical data
load capacity	max. 10 Nm
joint relief	spring assembly and friction discs
weight (net)	ca. 1.4 kg

Special features
<p>VISO</p> <ul style="list-style-type: none"> • easy to position • multiple spring-relieved • application specific load design up to 10 nm • easy mounting • individual mounting adapter
<p>fastening</p> <ul style="list-style-type: none"> • ceiling • pin • roller stand

VISO – VARIATIONS



VISO C

ceiling version | on request



VISO P

pin version | on request



VISO P with roller stand

in combination | on request



Service







Good partnership



Service and support

We not only want to develop the optimal products for you, we also want to be the best partner. That is why we are happy to support you in all phases of your project, in all questions concerning planning, installation and use of our products.

Product consultation & sampling

Derungs medical luminaires cover a wide range of applications in human and veterinary medicine. Discover the advantages of Derungs luminaires in a conversation or as part of a sampling. Let us inspire you.

Technical service

We answer your questions about technology, installation and care of your Derungs-quality luminaire. If you should need repairs or spare parts, our international service network is at your disposal.

Training

The operation of our luminaires is generally intuitive. So that our users can benefit from the best possible working conditions, we make our dealers, facility managers and service technicians fit for Derungs.

Downloads

On our website you will always find the latest information. Our specialist dealers receive exclusive access to marketing and sales documents. Contact your sales consultants for more information.

Logistics & order

If you would like to know more about your desired luminaire or would like a quotation, your specialist dealer or one of our advisors will be happy to answer your questions.



5 YEARS
WARRANTY
for all electrical
components



Register products



Would you like a little more?

Medical luminaires from Derungs stand for highest quality, optimal light output and high-class design. In addition, you can now register your Derungs medical and enjoy further advantages.

Register your Derungs medical light and benefit:

Plus 1 year warranty

The warranty is extended automatically upon completion of registration to a total of 3 years (for mechanical parts).

Current info according to MDR

For product updates and recalls you will be informed immediately.

In 3 simple steps

- scan QR Code
- fill out online form
- done!



Register product

Light Facts

.....





Colour temperature and colour rendering



Two decisive quality features

In medical technology, colour temperature and colour rendering properties are important quality characteristics for evaluating a luminaire. They describe how well colours are reproduced in the work or examination area under artificial light.

Colour temperature of light:

The colour temperature describes the colour impression of an illuminated object. This depends on the spectral composition of the light and is given in the unit Kelvin. The following applies: The higher the temperature value, the cooler white the light colour.

Warm white: 2500 - 3300 K

emphasizes red, yellow and orange tones –
cozy light for comfortable rooms

Neutral or universal white: 3300 - 5300 K

contrasts are emphasized –
concentration enhancing, working light

Daylight white or cool white: > 5300 K

emphasizes blue, purple and green tones –
attention-grabbing and activating



Colour rendering index

The colour rendering index Ra (Colour Rendering Index, CRI) is used to evaluate artificial light sources. This index indicates how true to nature the colours are under the light source in question compared to the colour rendering under natural daylight.

The highest value of Ra is marked with the number 100. Ra 100 means that all colours of an object are recognized as they would be under daylight: These therefore appear to the observer as "natural". The more the colour rendering index Ra deviates from 100, the worse the colours on illuminated objects are reproduced.

How is the Ra value determined?

In order to determine the Ra value of a light source usually 8 frequently occurring test colours are used with a reference light source and the light source to be tested. The smaller the deviations between the reference light source and the light source under test, the better the colour rendering property of the light source under test.

- Test colour R9 particularly important for differentiating various shades of red in tissue and blood
- Test colour R13 is the "skin colour", important to better identify veins and blood vessels

Ra 65

Ra 73

Ra 95



Colour temperature - the test





Wood's Light



Dermatological diagnoses in human, legal and veterinary medicine.

Lights with Wood's Light or black light are special examination lights. They are used for the diagnosis of skin and scalp lesions. In the process, disease lesions and pigmentary changes fluoresce under UV light.

Example areas of application:

Suspicious lesions of the skin

Illuminating the skin with ultraviolet light causes a fluorescent glow of some bacteria and fungi.

Wood's Light also highlights skin pigments.

Pigmentary disorders, such as vitiligo or dermatomycosis, can be diagnosed more easily.

Vitiligo in light skin types

Wood's Light can be used for the early diagnosis of vitiligo. Especially in patients with light skin, lesions can be detected early and thus be treated more quickly. These areas have sharper boundaries under Wood's Light and look light blue-white or yellow-green.

Other vitiligo-like conditions:

- ESCHENLAUBFLECKEN (M. Pringele)
(blue-white fluorescence compared to normal skin)

Pseudomonas - bacterial infections

Inflamed wounds of the skin should be examined by the trained eye of a physician, because infections caused by bacteria such as Pseudomonas can lead to serious complications, especially in burns.

If Wood's Light is used for the examination the bacteria look bright green.

Other bacterial skin diseases:

- ERYTHRASMA (red fluorescence)

Tinea capitis - shear fungal lichen

Round, bald or scaly areas on the scalp or in the beard indicate a tinea infection. For the visual diagnosis of tinea capitis, Wood's Light examination lights can be used. The fungal species that cause tinea capitis, look blue-green or dull blue under Wood's Light.

Other dermatomycoses:

- FAVUS (toxic green fluorescence)
- TRICHOBACTERIOSIS AXILLARIS
(yellow-ochre fluorescence)
- MICROSPORIA (faint greenish fluorescence)
- PITYRIASIS VERSICOLOR
(yellow-ochre fluorescence)

Head lice or hair spray residue?

The causes of itchy scalp can be many and varied. Head lice are one possible diagnosis. However, nits from head lice are difficult to distinguish from dried hair spray or bandages from hair. If one uses a Wood's Light lamp for examination, nits can be unmasked relatively quickly. Live nits glow white under a Wood's Light, while empty nit containers look gray.

Another parasitic infectious disease:

- SKABIES (gray-white mite ducts)

Our OPTICLUX magnifier lamps with Wood's Light

This special model variant combines two illumination modes in one unit: daylight white illumination and Wood's Light. Thus, different examinations can be performed with only one light. Conventional Wood's Light require a complete darkening of the room. Thanks to highly efficient LEDs, this is not necessary with the Opticlux.

And that means less effort and more time for the patients.



LED light and dimming

Skin with LED light similar to daylight.

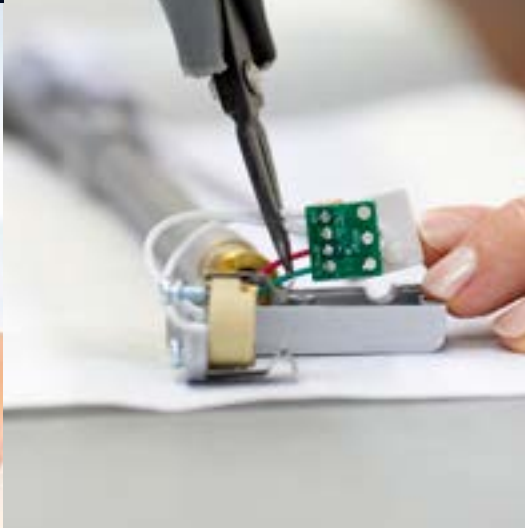
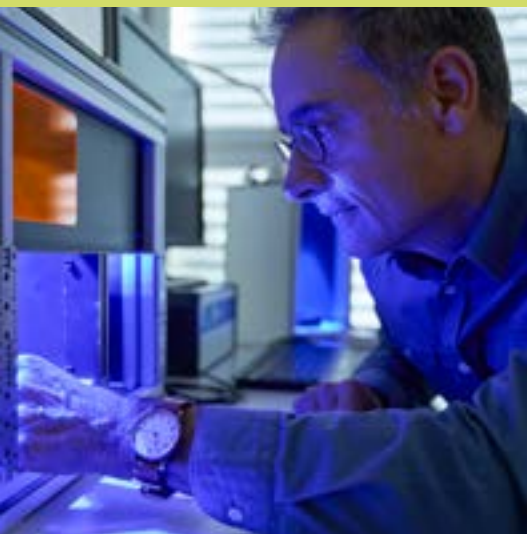


Wood's Light (365 nm)

reliable diagnosis: skin lesions appear different with Wood's Light, e.g. in skin diseases such as favus, intertrigo types, erythrasma.



Real passion for medical lighting





We are a modern, reliable and innovative company where people work whose hearts beat for medical technology.

In Switzerland, we develop and assemble high-quality lighting solutions for medical applications.



We are networkers



Quality management



Our awards



reddot winner

Our value proposition



List of sources

GettyImages:

Front page @ Sam Edwards

Shutterstock:

05 @ Artistdesign.13
11 @ hxdbzxy
11 @ Gorodenkoff
11 @ L Julia
11 @ Kichigin
11 @ everything possible
11 @ Anna Hoychuk
72 @ stockfour

123rf:

111 @ wavebreakmediamicro
112 @ profile_visualism

**All other photos and graphics
are intellectual property of
Derungs Licht AG**





Headquarters

Derungs Licht AG
Hofmattstrasse 12
9200 Gossau
Switzerland
+41 71 388 11 66
mailbox@derungs.swiss
www.derungs.swiss

Consulting & Distribution

Germany

Derungs Medical GmbH
Rudolf-Diesel-Strasse 2
78239 Rielasingen-Worblingen
Germany
+49 7731 90 97 19-0
info@derungsmedical.com

France

Waldmann Eclairage S.A.S.
Zone Industrielle
Rue de l'Embranchement
67116 Reichstett
France
Phone +33 3 88 20 95 88
Fax +33 3 88 20 95 68
info-fr@waldmann.com

Italy

Waldmann Illuminotecnica S.r.l.
Via della Pace, 18 A
20098 San Giuliano Milanese (MI)
Italy
Phone +39 02 98 24 90 24
Fax +39 02 98 24 63 78
info-it@waldmann.com

Netherlands

Waldmann BV
Lingewei 19
4004 Lk Tiel
Netherlands
Phone +31 344 631019
Fax +31 344 627856
info-nl@waldmann.com

Austria

Waldmann Lichttechnik Ges.m.b.H.
Gewerbepark Wagram 7
4061 Pasching/Linz
Austria
Phone +43 7229 67400
Fax +43 7229 67444
info-at@waldmann.com

Scandinavia

Waldmann Ljusteknik AB
Botvid Business Center
Fågelveivägen 9
SE-145 53 Norsborg
Sweden
Phone +46 8 990 350
Fax +46 8 991 609
info-se@waldmann.com

Switzerland

Waldmann Lichttechnik GmbH
Benkenstrasse 57
5024 Küttigen
Switzerland
Phone +41 62 839 1212
Fax +41 62 839 1299
info-ch@waldmann.com

USA

Waldmann Lighting Company
9 W. Century Drive
Wheeling, Illinois 60090
USA
Phone +1 847 520 1060
Fax +1 847 520 1730
waldmann@waldmannlighting.com

China

Waldmann Lighting (Shanghai) Co., Ltd.
Part A11a, No. Five Normative Workshop
199 Changjian Road, Baoshan
Shanghai, P.R.C. 200949
China
Phone +86 21 5169 1799
Fax +86 21 3385 0032
info-cn@waldmann.com



Derungs Licht AG is a company of the Waldmann Group
www.derungs.swiss